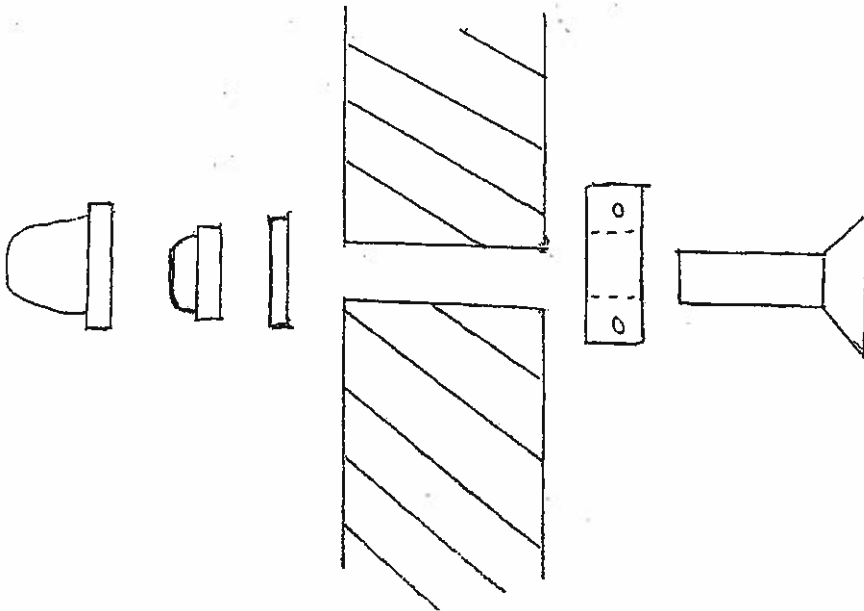
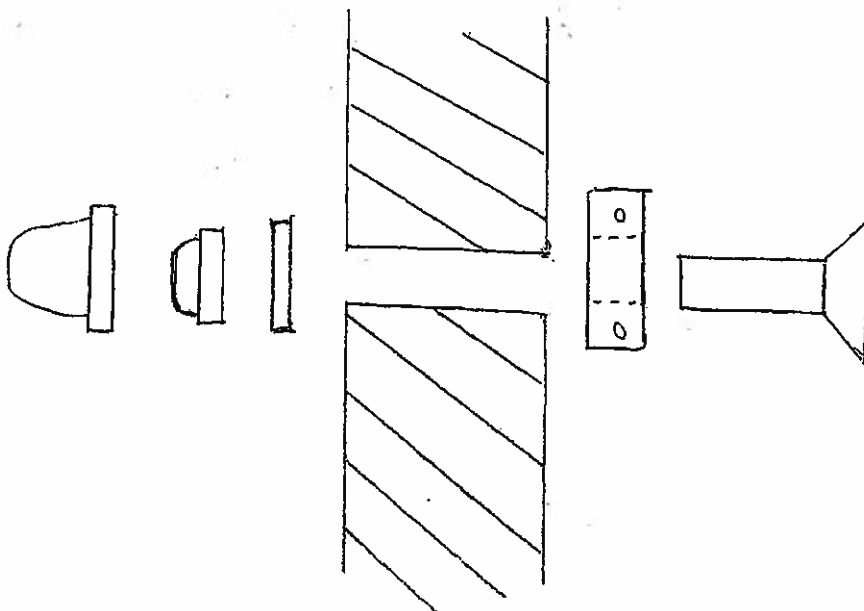


## Footman Bolt Assembly



1. Disconnect the footman.
2. Remove nut from the main shaft, and take the wheel off.
3. Drill a  $\frac{1}{4}$ " hole in the wheel where the previous bolt was. Be sure to put a piece of wood on the other side of the wheel, this will ensure that the wheel does not split when the drill bit comes through.
4. Insert new assembly as illustrated in the diagram.
5. Reinstall the wheel and attach the footman, now you are ready to spin again.

## Footman Bolt Assembly



1. Disconnect the footman.
2. Remove nut from the main shaft, and take the wheel off.
3. Drill a  $\frac{1}{4}$ " hole in the wheel where the previous bolt was. Be sure to put a piece of wood on the other side of the wheel, this will ensure that the wheel does not split when the drill bit comes through.
4. Insert new assembly as illustrated in the diagram.
5. Reinstall the wheel and attach the footman, now you are ready to spin again.